

REN
ER | EX
RENEWABLE ENERGY EXCHANGE

Digital platform for
renewable energy projects

Now also for PPA projects!



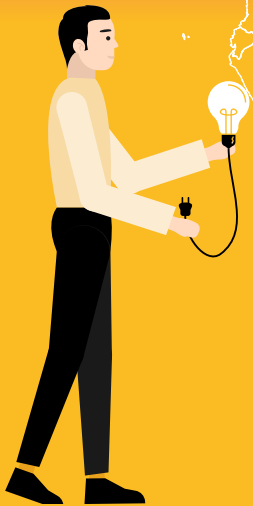
As an **INVESTOR** you can search for projects matching your renewables portfolio globally for free. Disclose your data and identity to select business partners exclusively.



As a **PROJECT DEVELOPER** you can place your renewable energy projects on RENEREX for free. Share project details with potential investors or off-takers of your choice only. Rely on European data protection standards.



RENEREX



As an **OFF-TAKER** you can search for potential projects which will provide you with power utilizing PPA-supply structures.

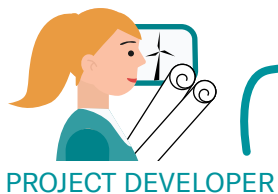
Internationality: Our digital platform forges contacts between developers, off-takers, and investors from around the World.

Trust: Projects and users' identities are subject to a brief plausibility check.

Up to Date: All projects are current and approved by the developer.

Usability: The right project is only three clicks away.

Confidentiality: You choose your project partners and the information you share.



PROJECT DEVELOPER

Create projects

Publish project exposés

Search for projects

Evaluate inquiry

Approve profile

Ask for project and contact Info



INVESTOR

Share project info

Evaluate projects



OFF-TAKER

Over 250 developers and investors are already part of RenereX!



Sign up now!
www.renereX.com



Need assistance?

Contact our renewable energy experts. We have offices in 49 countries and are happy to assist you with your inquiry. We offer support in the following areas:

Finance and Investment

Legal

Technology

Projects and Markets

*Find out more at
[www.roedl.com/
renewable-energy-
consulting/](http://www.roedl.com/renewable-energy-consulting/)*





Tobias Kohler

Renewable energy contact for the Baltic region

Attorney-at-law (Germany), Partner

Head of offices Lithuania and Belarus

T +370 5 212 35 90

M +370 6 873 32 88

tobias.kohler@roedl.com



Liudgardas Maculevičius

Renewable energy contact for Lithuania

Attorney at Law (Lithuania)

Associate Partner

T +370 5 2123 590

M +370 60699744

liudgardas.maculevicius@roedl.com



Esmeralda Balode-Buraka

Renewable energy contact for Latvia

Attorney at Law (Latvia)

T +371 6733 6440

T +371 2659 3943

esmeralda.balode-buraka@roedl.com

ESTONIA

Tartu mnt 13, EE-10145 Tallinn

T +372 680 5620

F +372 680 5621

tallinn@roedl.com

www.roedl.com/ee

LATVIA

Kronvalda bulv. 3-1, LV-1010 Riga

T +371 6733 8125

F +371 6733 8126

riga@roedl.com

www.roedl.com/lv

LITHUANIA

Tilto g. 1, LT-01101 Vilnius

T +370 5212 3590

F +370 5279 1514

vilnius@roedl.com

www.roedl.lt

Rödl & Partner

Äußere Sulzbacher Straße 100
90491 Nuremberg

Germany

T +49 911 9193 3504
info@renerex.com

www.renerex.com

www.roedl.com/renewable-energy-consulting/

